

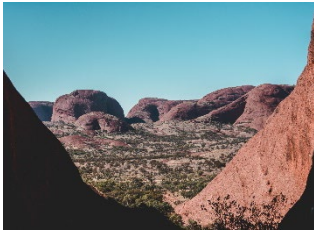


Aboriginal & Torres Strait Islander Acknowledgement and Commitment

Easy English

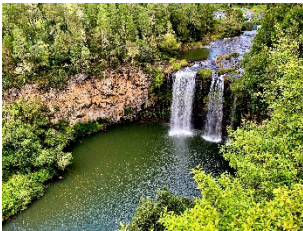


Aspect acknowledges Aboriginal and Torres Strait Islander Peoples as the First Peoples of Australia.



We acknowledge the cultural and spiritual connections First Peoples have with the

- land



- waters and



- sea.

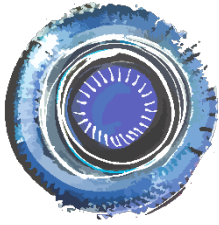


We acknowledge our Aboriginal and Torres Strait Islander employees and service users.



Aspect are committed to working with Aboriginal and Torres Strait Islander Peoples to implement our Innovate Reconciliation Action Plan (RAP).

The RAP is driven by the Aspect Strategic Plan



Our vision for reconciliation is a country built on respect and unity with Aboriginal and Torres Strait Islander peoples and their cultures.



We recognise the impacts of our shared history on First Nations peoples.

We acknowledge their continual strength and resilience.



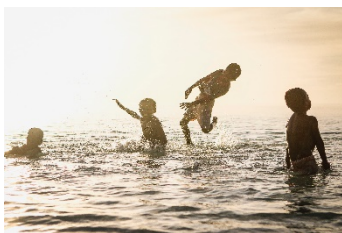
'Connection' by Maria Watson-

Aspect is committed to walking alongside Aboriginal and Torres Strait Islander peoples and their communities, to deliver the best outcomes.



Aspect will aim to work in partnership to:

- Understand and learn, alongside Aboriginal and Torres Strait Islander peoples, the truth of our nation's history and recognise the struggle for equal rights



- Build positive, safe and respectful relationships with communities



- Celebrate the rich histories and cultures of First Nations peoples
- Create environments of sensitivity and safety



- Listen and collaborate with our Aboriginal and Torres Strait Islander colleagues and stakeholders in all that we do



- Understand and celebrate the strengths and aspirations of people on the autism spectrum



- Provide culturally responsive, safe and accessible services

This document was adapted from the Aspect Aboriginal and Torres Strait Islander Acknowledgment and Commitment Policy that can be found on the Aspect website at www.autismspectrum.org.au.

This document was developed in consultation with Aboriginal employees and external stakeholders.

Should you need support to understand Aspect's written information in a language other than English, please call TIS on 131 450 to request an interpreter in your preferred language, and ask for Autism Spectrum Australia (1800 277 328).

This material may not be copied (except as legally allowed for private use and study) or further disseminated without the express and written permission of the legal holder of the copyright. © 2018 Autism Spectrum Australia