

# Our School



87 Anzac Hwy, Ashford SA 5035  
(08) 7326 0200  
[autismspectrum.org.au/treetop](http://autismspectrum.org.au/treetop)





# Our Purpose

**a different brilliant<sup>®</sup>**  
understanding, engaging & celebrating the  
strengths, interests & aspirations  
of people on the autism spectrum



We understand



We engage



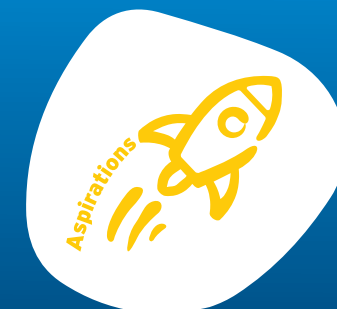
We celebrate



Strengths



Interests



Aspirations

# Meet our Principal



## Welcome to Treetop School

Aspect Treetop School is proud to be the only autism-specific education program for students from Reception to Year 10 in Adelaide. We understand the uniqueness of every child, value their individual strengths, interests and aspirations and we celebrate the '*different brilliant*' of every child.

Success in our school is a partnership between our students, staff and families. Embracing each student's individuality and engaging them through their special interests makes our teaching unique and very rewarding. Our dedicated and knowledgeable staff which comprises both teaching and non-teaching staff and a learning support team of a psychologist, speech pathologist and occupational therapist are committed to ensuring our students achieve their potential in a safe and rewarding learning environment.

We offer small class sizes with a ratio of six students to two educators, allowing staff to individualise the learning approach for each student. Accommodations are provided for each student's unique learning needs and differences are respected, understood and embraced. We offer quality teaching through the unique combination of the Aspect Comprehensive Approach (ACA) and the Australian Curriculum. This approach provides students with many opportunities to experience a variety of programs and

activities to enhance their learning. The Five Point Star is a person-centred framework and is at the centre of the ACA. It is through the Five Point Star that staff develop a comprehensive and positive understanding of each student they support.

As Principal, I have an expectation that quality programs are delivered which have a positive impact on each student in our care. Our priority is providing quality programs customised to develop each student's speech and learning abilities, social and emotional learning, and promote engagement in each of the curriculum learning areas. Our purpose-built gym, cooking facilities and community participation allows our students to generalise skills learnt in the classroom and promotes independence.

I encourage you to call our school and find out more about the autism-specific programs our terrific Treetop team delivers and the positive impact our program can have for your child. We look forward to hearing from you and will gladly answer any of your questions.

**Kaye Perry**  
School Principal

## Acknowledgment of Country

Autism Spectrum Australia (Aspect) acknowledges the Kaurna People as the Traditional Custodian of the lands on which we work and live. We pay our respect to their Elders past, present and emerging.



# About Treetop School

## About Aspect Treetop School

Aspect Treetop School in Ashford, SA was established in 2016 and provides dynamic, individualised learning for students on the autism spectrum with a caring and nurturing approach. Our main campus proudly offers 14 classes for students from Reception to Year 10, with current students' age ranging from 5 to 16 years.

Our highly skilled staff are committed to continual improvement and value the importance of positive home/school relationships. We work closely with students and their families to develop confidence and skills that will support transition to less specialised settings and inclusion into a student's local community in the future.

Aspect Treetop School is committed to the provision of contemporary and progressive education specifically for students on the autism spectrum. We have created a setting where the unique strengths and interests of all students is used to drive their learning. We are a vibrant school that thrives on personalising learning and using evidence-based and informed best practice in autism. Students are encouraged to become self-determined learners through the provision of individualised and tailored learning programs.

## Focusing on transitions

The primary focus of Aspect schools is to help students develop the skills to become as independent as possible and to enable them to succeed in the wider community. Aspect Treetop School has a transition focus aimed at preparing children and young people for non-autism specific educational environments, whether this is in mainstream, supported classes or general disability classes.

Future planning and transition from an Aspect school into a non-autism specific education setting or into a post school program is part of the Individual Plan (IP) process for each student and their parents, guardians or the person responsible. The student's readiness for transition and the type of placement most suitable for each individual student will be discussed with their parents, guardians or the person responsible at each student's Individual Plan (IP) meeting.

## Planning made personal

Individualised planning is the most critical consideration in educational intervention for individuals with autism. While all children on the autism spectrum share many common traits, each individual child possesses his or her own unique profile of strengths, difficulties and learning styles.<sup>1</sup> A 'one size fits all' approach will never meet the needs of all students at all times. Rather, Aspect recognises the importance of individualised planning in promoting the potential of every learner.

Individualised Plans (IP) form the cornerstone of the approach adopted in Aspect schools. IPs are developed collaboratively with parents and students and are based on developmental and/or functional assessment.

The individual planning process is ongoing and dynamic.

1. Le Roux et al., 1998; Siegel, 2003.

*"The transition was unbelievable. They came and did a home visit. Aspect was just so incredibly holistic and supportive from the get-go. We shared with them some of our experiences and some of the things that we were feeling uncomfortable about, and how they would manage my son's needs and behaviour. And they just reassured us every step of the way."*

Parent

*"The IP meetings are very good. They're very structured. The information is collaborative between families and teachers... They do those quite well and I'm very impressed with that."*

Parent



# Inside our classrooms

Typically, classes are small, with around six students, so everyone gets more intensive individual support.



The classroom environment is purpose-built and carefully structured, with clearly defined work stations and autism-specific supports and strategies – such as calming spaces, key visuals and established routines.



Aspect Treetop School has recently upgraded their facilities. We have four new classrooms, a purpose-built gym and student kitchen. All remaining classrooms have recently been refurbished with special consideration being given to the autism specific supports our students require to promote independence and success.









# Why choose our school?

Our purpose-built school located in Ashford is the ideal location to start your child's education journey in a close-knit, caring community.

## **We understand autism like no other school**

Autism Spectrum Australia (Aspect) has been leading the way in providing services to people on the autism spectrum for 50+ years - and we offer the largest autism-specific education program in Australia. Our students benefit from decades of experience and research into how to best support people on the autism spectrum. Everything we do is evidence-informed and aims to give students the best opportunities possible throughout their lives.

## **Get a great education, tailored to you**

Aspect is a registered and accredited school with highly trained, capable teachers who are passionate about what they do. We follow the Australian Curriculum and we carefully adapt learning and development based on each individual student's strengths and interests. Every student therefore has a positive experience that is personalised for them.

## **A community where you'll feel right at home**

We're more than a school - we're a close-knit, caring community of families and carers with similar experiences. When you join us, you'll have an instant support network to share your journey with Aspect and beyond. Together, we share experiences and advice and celebrate milestones and achievements.

*We run coffee mornings, run parent groups, grandparent groups and things like that so they can support each other. We've had parents connect as Facebook groups and do little plays."*

**Staff member**

## **The conversation is always open**

Communication is a key part of a student's education to make sure we're on the same page - and at Aspect, we're open, honest and supportive at all times. We encourage ongoing two-way conversations with every family, so it's never hard to bring up an issue or ask a question. After all, we're here to help.

*"As a parent, just knowing that he'd be supported, knowing that he's somewhere where he's understood, and knowing that the teachers are working as a team to help bring out the best in my child... it's been amazing."*

**Parent**

*"The teachers communicate with me whenever something happens, both positive and negative. I have found that it's been really good. It made me realise that I have made the right decision."*

**Parent**



## The journey doesn't end with us

A student's education journey usually has a few key transition points, and at Aspect, we are here to support you through these times of change. That includes coming into our school, and going out of our school into other educational environments. We also support students for up to 12 months after they've transitioned out of an Aspect school.

## We work in partnership with the 'home team'

In 2021 Aspect began developing a Working in Partnership Charter to provide an overarching set of principles to guide Working in Partnership at Aspect into the future. This charter will be rolled out across the organisation to provide guidance and support to Autistic and non-Autistic staff around what working in partnership looks like.



*"They transitioned him from the main site at the end of the year last year, and he went to satellite class at the beginning of year 2. He was really nervous about another move. So, they did a lot of work to help him establish a sense of safety, give him all of the information about what he could expect, give him options, and what he could do when he's feeling overwhelmed. He was really into Harry Potter then. And the teacher at the satellite class actually sent a letter in the school holidays to my son saying that he has been accepted into the School of Witchcraft and Wizardry."*

**Parent**

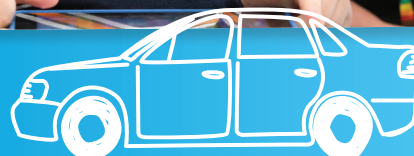


# Your need-to-knows



## School hours

Official school hours are 9:00am to 2:50pm. Students arrive at school in the morning between 8:50am - 9:10am and depart between 2:50pm - 3:00pm.



## Drop off and pick up

Students are dropped off and picked up from school by parents.

## Wet weather days

In the event of wet weather, students will work and play inside their classroom or the gym, supervised at all times by Aspect staff.



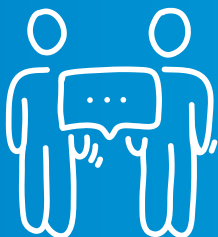
## Timetable

Each term parents will receive a copy of the class timetable as well as a term overview.



## What to wear

Aspect students are encouraged to wear the full Aspect Treetop School uniform at all times. Please contact the school directly regarding uniforms.



## Parent info and meetings

IP meetings are held with the teacher in Term 1 and a review meeting in Term 3. Teachers, Student Support Officers and families have the opportunity to meet with each other in the first two days of the school year. During this time, the Five Point Star is discussed.



## Staying in touch

The See-Saw app is used as the communication method for students and families at Aspect Treetop School. The teacher will correspond via the app approximately three times per week. Administrative information is communicated via TASS which is Aspect's school management system. If there is an urgent matter, please call the school office on (08) 7326 0200.

# How enrolment works

## Come to a school info session.

Give us a call on (08) 7326 0200 to find out when the next one will be held.



Step 1



## A spot opens up.

When a position becomes available at the school, the School Enrolment Committee considers all the students on the waitlist. This decision is made based on a number of factors - it's not simply on a 'first come, first served' basis.

Step 2

## Join the wait list.

To register a student, just fill out a registration form (you can either get this at the info session, or by contacting Aspect Treetop School).

Step 3



## Enrolment offer.

Once there's a place available, we'll send a formal letter of offer and an Enrolment Contract to the student's parents or guardians. You'll need to accept the offer by signing and returning the Enrolment Contract and paying the non-refundable enrolment fee.

Step 4

## Family interview.

Before a student is officially offered a place, they may be invited to meet with our team (together with family or carers).

Step 5

# Who is eligible?

## Eligible students:

- Are Australian citizens, permanent residents of Australia or hold an eligible Australian visa.
- Have had a formal diagnosis of autism spectrum disorder in the last two years.

*When a child is deemed eligible, they will be registered on the school's waiting list. The order of placement on the waiting list does not determine the order of an enrolment offer.*



# Our approach

## Aspect Comprehensive Approach (ACA)

Aspect uses an evidence-based, comprehensive approach to support people on the autism spectrum, and their family and carers. The ACA is implemented across our whole organisation, and it reflects our 50+ years of expertise in providing services to children, young people and adults on the autism spectrum.

The ACA provides for the development of 'individualised' or 'person-centred' supports. This means really getting to know and understand our students, identifying their interests, strengths (for some, their exceptional abilities) and their aspirations, and then developing individualised supports.



## The Five Point Star

The Five Point Star is our relationship-based approach to understanding and supporting students on the autism spectrum. The approach recognises the strengths of Autistic students – and also that Autistic students and non-Autistic people need to work together to understand each other, and to adapt to meet each other's preferences and needs. Aspect staff collaborate with students to develop their Five Point Star profiles, which are used to guide positive empathetic trusting relationships.

## Our guiding principles

- We focus on the strengths and interests of each student.
- We work in partnership with students, their families and their communities.
- We work to understand students from their perspective.
- Our approach is autism-specific.
- Our research focuses on best practice.
- We expect positive change and progress.
- Together we can achieve positive outcomes.

## Our values

We are passionate about people, about being positive and about what's possible.



# What else does Aspect offer?

Aside from our educational program, Aspect provides a number of services that may come in handy for students and families, now or down the track.

## Assessments for autism across the lifespan

These are provided face-to-face in Sydney and Coffs Harbour, or via telehealth for people who can't get to an assessment clinic (or prefer the telehealth format).

## Therapy

Aspect Therapy is a registered NDIS provider with a large team of allied health professionals (speech pathologists, occupational therapists, psychologists and social workers) and educators. Together, we develop and deliver individualised and small group autism-specific therapy and positive behaviour support.

## Support coordination

Our Support Coordination team can help NDIS-funded students to understand their budgets, how to start using their plans and how those plans are managed.

## Adult Community Services

In Sydney and Melbourne, we offer a range of individualised programs and supports for school leavers and adults on the autism spectrum. Programs are designed to be fun and engaging and help build confidence and skills.

## Workshops

Aspect offers a broad range of autism-related workshops and webinars for parents, carers, educators and health professionals. We deliver practical, real-world solutions to benefit families, communities, professionals and organisations.

**Aspect Treetop School main site**  
87 Anzac Hwy, Ashford SA 5035

**Phone** (08) 7326 0200



## Any questions? We're here to help.

If you have a question or would like to chat, we would love to hear from you. Don't hesitate to get in touch.

**Phone** +61 1800 277 328

**Email** [customerservice@autismspectrum.com.au](mailto:customerservice@autismspectrum.com.au)

**Visit** [autismspectrum.org.au](http://autismspectrum.org.au)

**For the full range  
of Aspect services,  
please scan the QR  
code or visit  
[autismspectrum.org.au](http://autismspectrum.org.au)**

