

# Aspect Education Empowering every Autistic student to thrive

Aspect Education is Australia's leading provider of autism-specific education, with more than 55 years of experience supporting Autistic students to learn, grow and thrive. Our evidence-informed approach is grounded in deep expertise, ongoing research, and a commitment to seeing the strengths and potential in every learner. With a focus on individualised support and inclusive environments, we empower Autistic students with the tools, confidence and opportunities they need to succeed in school—and in life.



## Our purpose a different brilliant®

Understanding, engaging  
and celebrating the strengths,  
interests and aspirations of people  
on the autism spectrum.

## About the Aspect Learning Improvement Collaborative (ALIC)

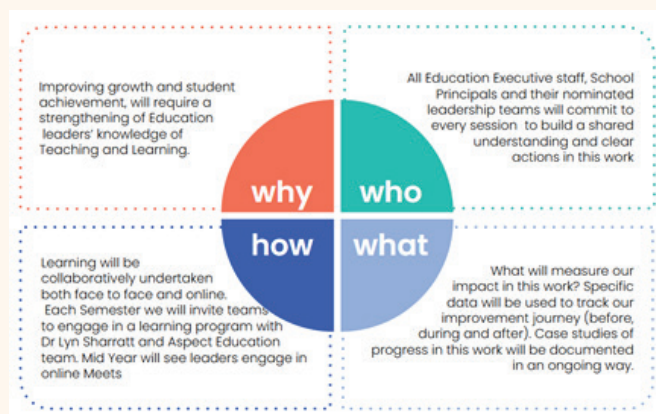
The aim of our work together is to measure and increase student growth and achievement whilst strengthening our education leader's knowledge of teaching and learning in an autism-specific context.

Dr. Lyn Sharratt has joined us as our critical friend on this journey. She has successfully implemented a learning framework in mainstream school settings across the US, Canada, Chile, UK and Australia. In her book, CLARITY, Lyn states that clarity is "being explicit about precision in practice through research done, experiences lived and knowledge gained from collaboratively working side by side to improve the outcomes for all students." For Aspect, our CLARITY journey embraces the concept of 'illuminate' to emphasise our mission of fostering a culture of high expectations and highlighting the measures that we use to demonstrate student success.

The Aspect Learning Improvement Collaborative (ALIC) works together to illuminate delivery of autism-specific

strategies, best classroom practices and our student growth. We continue to illuminate a road to success through fresh ideas, new opportunities and a commitment to excellence in education leadership.

If you're curious about what ALIC is and how it works, the summary below outlines the purpose, principles, and impact of this unique approach.



# The impact of the ALIC program



## A systematic approach to improvement

Developed with Dr Lyn Sharratt, ALIC is grounded in 14 parameters for system and school improvement. Since implementation, we've seen notable gains, particularly in communication and literacy. Using data walls to help track progress, educators now use real-time data to tailor instruction, aligning with autism-specific best practice.

The program has also strengthened leadership and teaching. Principals feel more confident in leading improvement, and educators have enhanced their data literacy to refine teaching and make informed decisions.

ALIC emphasises collaboration and ongoing learning. Learning walks and talks foster reflection and sharing of best practice, while Instructional Case Management Meetings (ICMMs) support timely student interventions, improving engagement and attendance.

## A culture of excellence and continuous growth

The ALIC program represents a culture of continuous improvement that is shaping the future of autism-specific education. By equipping educators with the tools to drive evidence-based teaching and by strengthening collaboration across Aspect schools, we are ensuring that every student receives the support they need to learn, grow and thrive.

### IMPACT

60

staff  
participating  
in ALIC

10

schools  
participants

89%

increase in Principal  
confidence in leading  
school improvement  
approaches

78%

increase in knowledge  
and confidence in  
teaching and learning  
over 12 months

97%

growth in  
leadership  
practice and  
knowledge



"Our work with ALIC has strengthened our culture of learning through a shared belief that every student can learn."

MARK RUDD  
Principal, Aspect Central Coast School

"Data has illuminated the faces of our Autistic students at Aspect Treetop School through providing a framework for teachers to have a collaborative approach to supporting student learning."

KAYE PERRY  
Principal, Aspect Treetop School