

60 years of a different brilliant®

1960s



DR ANDREW VERN
BARNETT AM MBE
AND HIS WIFE MARGARET
VERN BARNETT OAM



1966
Autistic Children's Association of NSW founded



1967
First school opened in Belrose



ARCHITECT JIM BRYANT AND PRIME MINISTER HON. WILLIAM
MCMAHON AT OPENING OF ASPECT VERN BARNETT SCHOOL, 1971

1970s

1971
Aspect Vern Barnett (Forestville) opened, replacing Belrose

1972
Family liaison commences offering counselling support

1973
Psychology introduced as a support service for teaching staff

1974
Social facilitation centre opened at Vern Barnett School (individualised programs for adolescents and socialisation opportunities for pre-schoolers)

New classroom established in Annandale

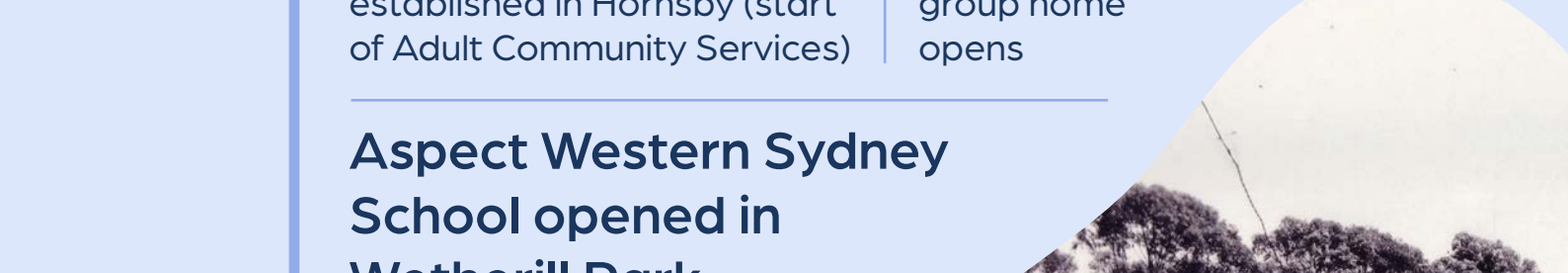
1975
First early intervention and outreach programs commenced

1977
Aspect Hunter School opened in Newcastle

1978
New campuses opened in Kingsgrove and Randwick



ASPECT VERN BARNETT SCHOOL PLAYGROUND, 1972



STAFF & STUDENTS AT ASPECT VERN BARNETT SCHOOL, 1981

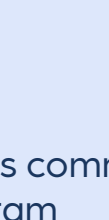
1980s

1981
First group home opened in NSW

Dr Barnett retired

1982
Aspect Central Coast School opened in Terrigal

1984
Renamed Autistic Association of NSW



Activity centre for adults established in Hornsby (start of Adult Community Services)

Second group home opens

Aspect Western Sydney School opened in Wetherill Park

1985
Roger Q Industries commenced – first adult employment program

1986
Aspect South Coast School opened in Wollongong

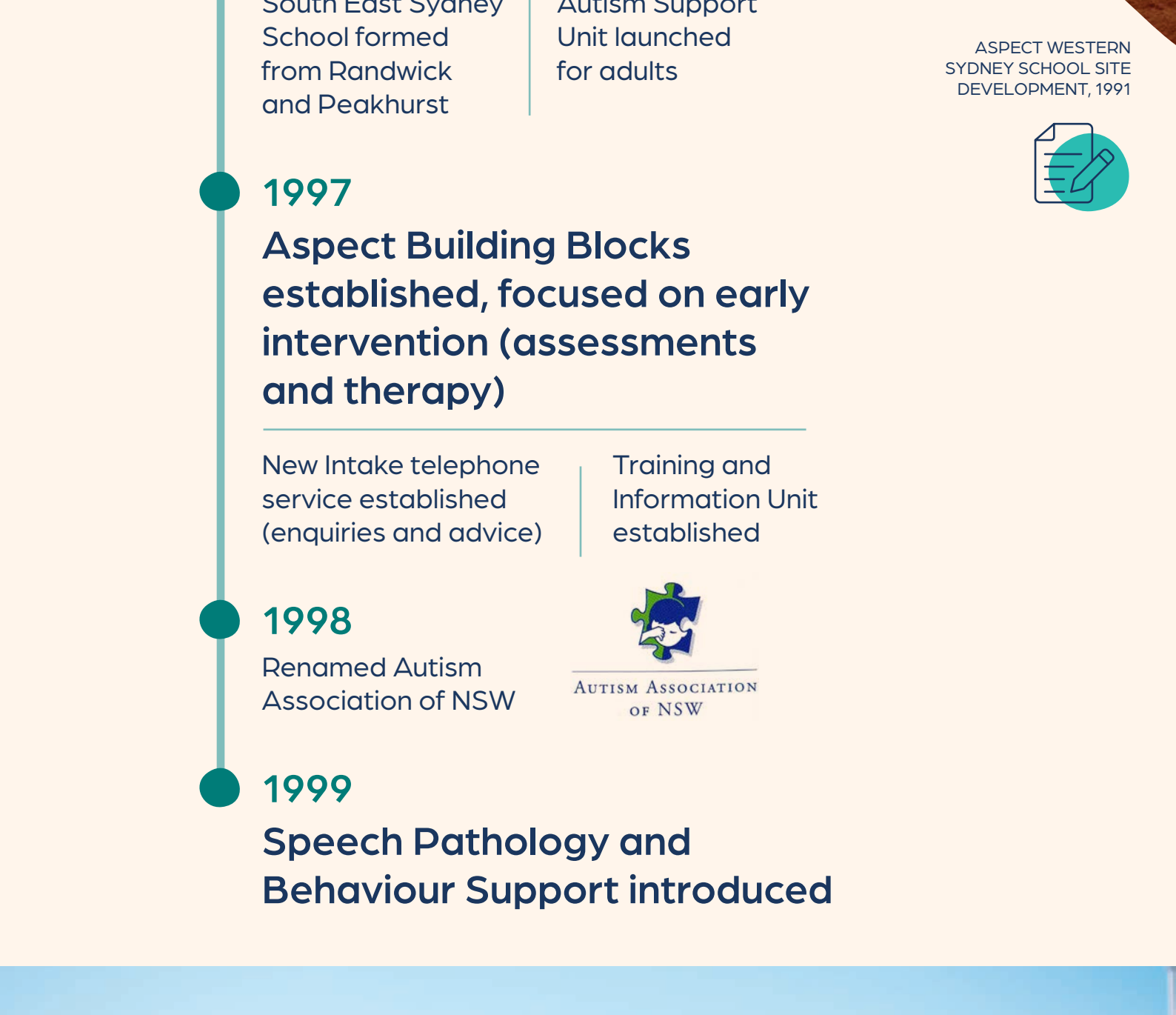
Annandale School relocated to Kingsgrove and Randwick

1987
First vocational training and work experience program provided to senior school students

1988
Harvey-Tec Enterprises commenced – work readiness program



FIRST ASPECT CENTRAL COAST SCHOOL SITE - TERRIGAL, 1983



CHARITY AWARENESS WEEK WALK THROUGH MARTIN PLACE, 1988

1990s

1991
New orientation program launched for families and relatives

1992
Establishment of Autism Research Institute

School Outreach Service established

First satellite class opened at Belrose Public School

1993
Kingsgrove School relocated to Peakhurst

1994
First secondary satellite classroom established

1995
First Catholic Education satellite classroom opened

1996
South East Sydney School formed from Randwick and Peakhurst

Autism Support Unit launched for adults

1997
Aspect Building Blocks established, focused on early intervention (assessments and therapy)

New Intake telephone service established (enquiries and advice)

Training and Information Unit established

1998
Renamed Autism Association of NSW



1999
Speech Pathology and Behaviour Support introduced



ASPECT WESTERN SYDNEY SCHOOL SITE DEVELOPMENT, 1991



ASPECT COMBINED SCHOOLS SPORTS CARNIVAL

2000s

2000
Tim Fischer AC and Judy Brewer AO became Patrons

2001
First Charity Golf Day held

2002
Autism Information Line established for enquiries

Aspect South East School opens first high school satellite in public school

2003
Behaviour Intervention Service established

Parent-to-parent support program established

2004
Renamed Autism Spectrum Australia (Aspect)



2005
Expanded into Far North Coast, NSW with early intervention services

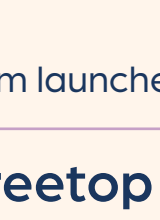
Building Links™ and Recipe for success™ introduced supporting parents with training

2006
Regional satellite classrooms established in Riverina

John Doyle becomes patron

Diagnostic Assessment Unit established

2007
New logo introduced



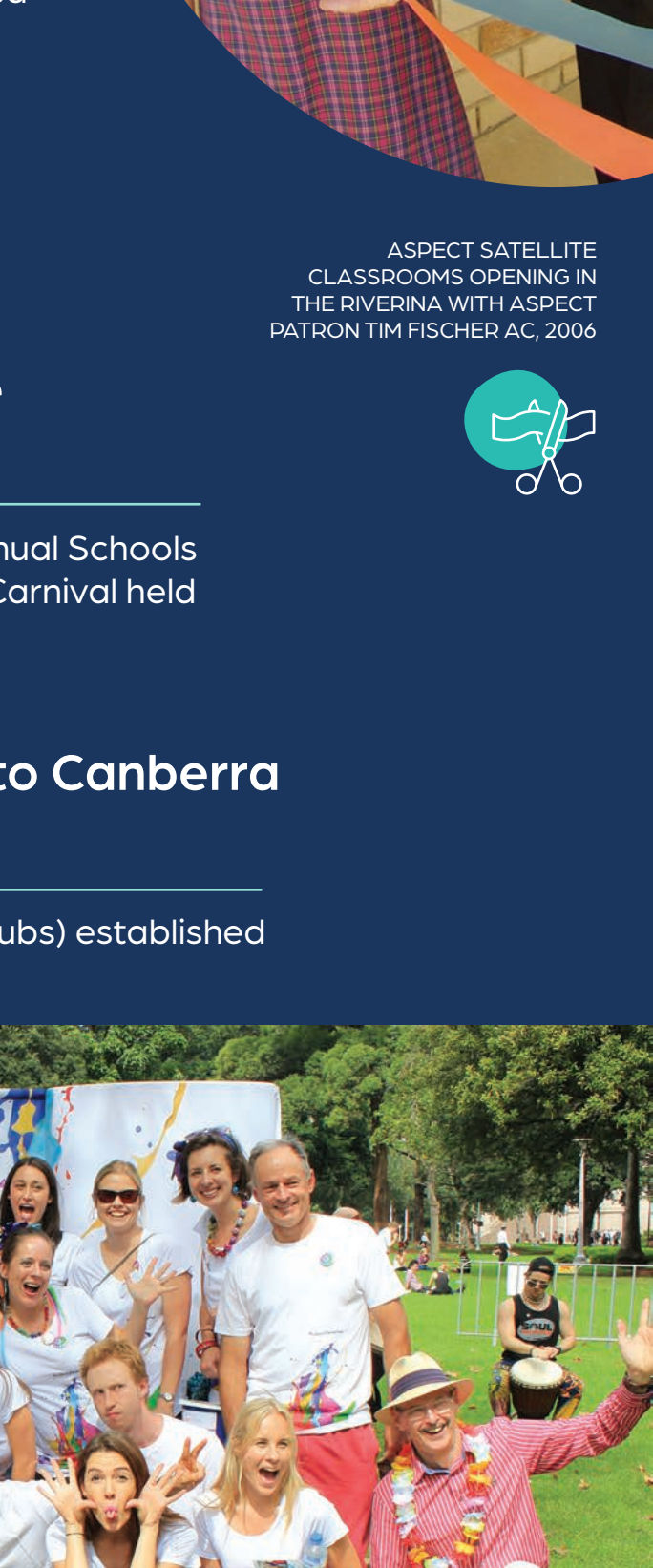
2008
Won national Positive Partnerships tender

Autism Advisor Program launched

First Annual Schools Sports Carnival held

2009
Expanded services into Canberra (Early intervention)

Peer Support Network (social clubs) established



ASPECT SATELLITE CLASSROOMS OPENING IN THE RIVERINA WITH ASPECT PATRON TIM FISCHER, 2006



ASPECT STAFF AND VOLUNTEERS LED BY CEO ADRIAN FORD ON WORLD AUTISM AWARENESS DAY IN HYDE PARK, 2015

2010s

2010
Expanded services in Victoria

Satellite classrooms added in Port Macquarie

2011
Aspect Riverina School (Albury) and Aspect Macarthur School (Cobbity) officially opened

Early Days workshops launched

2012
New purpose-built Aspect Hunter School at Thornton opened

New logo introduced



2013
Aspect Practice launched as national knowledge-sharing initiative workshops and consultancy

2014
First Autism in Education conference held

Merged with Alpha Autism in Victoria (Adult Community Services)

2015
Five Point Star introduced, through an agreement with Autism Initiatives UK

First satellite classroom hosted by independent school Cedars Christian College

Aspect Therapy formed as a singular team

2016
Walk for Autism launched

Aspect Treetop School opened in Adelaide, South Australia

Aspect advances working in partnership with Autistic people through the Advisory Council (advising the Board) and Think Tank (shaping policy, practice and communications)

New site for Aspect Macarthur School – Coffs Harbour

Autism Friendly team formed

Aspect hosts the Asia Pacific Autism Conference 2017 (APAC17)

2018
Teletherapy launched for regional, rural and remote locations

Ride for autism launched

Aspect Therapy established in Norfolk Island

2019
Opening of Aspect Hunter High School

LGBTQIA+ Committee established and first participation in Sydney Mardi Gras

Aspect Research Centre for Autism Practice (ARCAP) launched



ASPECT TREETOP SCHOOL, 2013



ASPECT AND VICTORIA UNIVERSITY PARTNERSHIP AGREEMENT SIGNING, 2022

2020s

2020
Aspect @nywhere launched (COVID-19)

Run for autism launched

Aspect Distance Education Launched

First Autistic Board member appointed

Inclusion Statement developed

2021
A \$20M Capital Works Plan begins across all schools

TelePBS launched

Opening of Aspect South East Sydney – Loftus campus

Partnership with Bayley House to deliver the Sunflowers Hidden Disability Lanyard Scheme

2022
Working in Partnership Charter introduced

Expanded reach to Singapore (training and consultancy)

Victoria University partnership agreement signed

2023
ALIC program commenced with Dr Lyn Sharratt

Received grant for new Aspect Hills Shire School and ICS Hub in Liverpool

University partnerships expanded with satellite classrooms at University of Wollongong and Charles Sturt University

St Albans community hub (Adult Community Services) opens at Victoria University

2024
Aspect underwent a major brand refresh

Introduced ADHD assessments

Opening of new Melbourne office for Autism Friendly

Piloted International study tour

Launched Shine for autism

2025
Aspect Hills Shire School opens in Box Hill

Community of Practice launch event (Aspect Education)

New Port Macquarie campus secured in Thrumster

ADULT COMMUNITY SERVICES PARTICIPANT, AT VICTORIA UNIVERSITY'S ST ALBANS CAMPUS

