



Satellite classrooms

Specialised Aspect spaces
within your school

a different
brilliant®

Understanding,
engaging and celebrating
the strengths, interests and
aspirations of people
on the autism spectrum.

Acknowledgment of Country

Aspect (Autism Spectrum Australia) acknowledges the Traditional Custodians of the lands on which we work and live.

We pay our respect to their Elders past and present.



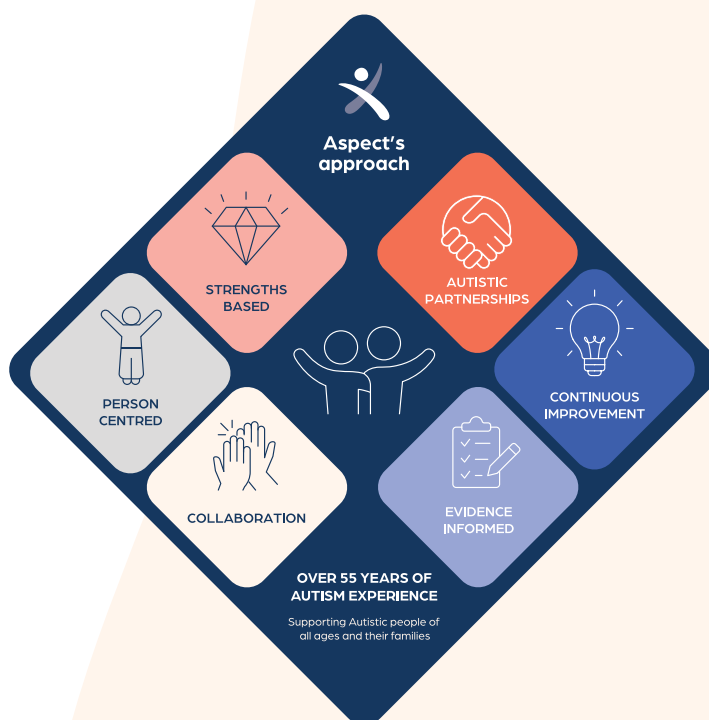
Drawing on 60 years of expertise,
Aspect's approach underpins our way
of delivering high-quality, individualised
education to our students.



Aspect's approach

Guided by six key principles and the latest evidence, we tailor our services to each child's strengths, interests and aspirations to help them thrive.

- 1. Autistic partnerships:** We embed Autistic perspectives in everything we do, ensuring our services, research and governance are shaped by lived experiences.
- 2. Strengths based:** We focus on individuals' abilities and interests.
- 3. Person centred:** We put the person at the centre of everything we do, tailoring supports and services to each individual's unique needs.
- 4. Evidence informed:** We use research to guide and shape our practices.
- 5. Collaborative:** We prioritise the views and preferences of Autistic individuals while working with their support networks to gain a well-rounded understanding of their needs, strengths and goals.
- 6. Continuously improving:** We evaluate our practices to find ways to improve our supports and services.



Aspect runs Australia's largest network of autism-specific schools and partner-hosted satellite classrooms.



Aspect's approach to autism-specific schooling

Our approach supports children and young people on the spectrum and their families by prioritising the specific needs of each individual. In every classroom, this translates into:

Individual learning plans

- Aspect classrooms provide structured, individualised learning plans that support strengths and challenges.

Sensory-friendly environments

- Many Autistic students may experience the sensory environment differently.
- Aspect classrooms offer quiet spaces, sensory-friendly lighting, and structured routines to reduce anxiety and sensory overload.

Social skills development

- Autistic students may prefer different approaches to social connection.
- Aspect classrooms provide opportunities for safe, supported socialisation.

Behavioural support

- Some Autistic students may have times of emotional intensity, and supportive approaches can help them feel safe and regulated.
- Aspect classrooms offer Positive Behaviour Support programs and staff are trained to manage behaviours of concern using universal, proactive practices creating a positive and supportive foundation. If behaviours persist then more targeted supports are implemented.

Communication support

- Some Autistic students are non-speaking or have speech and language delays.

Our model is simple and effective. Our satellite classrooms bring autism-specific expertise directly into mainstream schools, creating safe and supportive spaces while building capacity across the whole school community.


- Aspect classrooms integrate communication tools like Augmentative and Alternative Communication (AAC) devices, PECS (Picture Exchange Communication System), and speech therapy.

Access to therapies

- Aspect classrooms provide on-site occupational therapy, speech therapy, and behaviour support.
- This ensures that students receive comprehensive support without needing to coordinate multiple external services.

Stronger collaboration with families

- Parents and caregivers are integral to their child's education.
- Aspect staff work closely with families to ensure continuity between school and home.
- Student voice is valued and respected, from involvement in setting their own learning goals to SRC programs that empower students to help shape school life.



"As a parent, just knowing that he'd be supported, knowing that he's somewhere where he's understood, and knowing that the teachers are working as a team to help bring out the best in my child... it's been amazing."

— ASPECT PARENT

Join our fully supported school system

Aspect operates as a fully supported school system – ten independent schools and more than 100 satellite classrooms hosted by our highly valued partners. Our head office provides system level leadership, research, property, and governance support, ensuring consistent quality and evidence-based practice across every site.

This proven model is designed to support growth, giving new partners confidence that each satellite classroom is part of a strong, well-resourced system with long term proven success.

Region	Aspect school	Satellite classrooms
NSW		
Mid North Coast	Aspect Port Macquarie Campus, Thrumster (Opens 2026)*	Now seeking satellite Partner Schools.
	Aspect Coffs Harbour Campus**	
Newcastle and Central Coast	Aspect Hunter School, Thornton	<ul style="list-style-type: none"> • Our Lady of Lourdes Primary School, Tarro (K–6) • Holy Spirit Infants School, Abermain (K–3) • St James Primary School, Muswellbrook (Year 1–3) • Waratah West Public School, Waratah (Year 3–6) • St Joseph's Primary School, Port Macquarie (K–6) • Port Macquarie High School – MacKillop College, Port Macquarie (Year 7–12)
	Aspect Central Coast School, Terrigal	<ul style="list-style-type: none"> • Aspect Central Coast Senior College, Terrigal
Sydney West	Aspect Macarthur School, Cobbity	<ul style="list-style-type: none"> • St Christopher's Primary School, Moorebank (Primary) • Sarah Redfern Public School, Minto (Primary) • St John's Primary School, Campbelltown (Primary) • Briar Road Public School, Airds (Primary) • Clancy Catholic College, West Hoxton (Secondary)
	Aspect Western Sydney School, Wetherill Park	<ul style="list-style-type: none"> • St Patrick's, Blacktown (Primary) • St Joseph's, Schofields (Primary) • Trinity, Kemps Creek (Primary) • Emmaus College, Kemps Creek (7–10) • St Andrew's, Marayong (7–12) • Richmond PS, Richmond (Primary) • St Monica's, Richmond (Primary) • St Thomas Aquinas, Springwood (Primary) • St Columba's HS, Springwood (7–12) • St John Paul II, Schofields (7–10) • Gilroy College, Castle Hill (7–12) • Smithfield PS, Smithfield (Primary)

* Campus of Aspect Hunter School. ** Campus of Aspect Macarthur School.



Region	Aspect school	Satellite classrooms
NSW continued		
Sydney West	Aspect Hills Shire School, Gables (opened in Jan 2025)	<i>Now seeking satellite Partner Schools.</i>
Sydney North	Aspect Vern Barnett School, Forestville	<ul style="list-style-type: none"> • Our Lady of Good Counsel, Forestville (Primary) • St Kevin's, Eastwood (Primary) • Lane Cove PS, Lane Cove (Primary) • Corpus Christi, St Ives (Primary) – <i>until end of 2027</i>
Sydney South	Aspect South East Sydney School, Peakhurst	<ul style="list-style-type: none"> • Holy Innocents', Croydon (Primary) • St Michael's, Belfield (Primary) • Our Lady of Fatima, Caringbah (Primary) • St Mary Star of the Sea, Hurstville (Primary) • Kareela Public School, Kareela (K-2) • St Columba's, Leichhardt (Primary) • St Mary St Joseph, Maroubra (Primary) • Aquinas College, Menai (7-12) • Trinity College, Auburn & Regents Park (7-10) • Malek Fahd Islamic School, Greenacre (Primary)
South Coast	Aspect South Coast School, Corrimal	<ul style="list-style-type: none"> • St Paul's, Albion Park (Primary) • Barrack Heights PS (Primary) • St Pius X, Unanderra (Primary) • University of Wollongong Campus (K-12)
Riverina	Aspect Riverina School, Albury	<ul style="list-style-type: none"> • Moresby Park Kindergarten, Lavington (K-2) • Xavier High School, Albury (Secondary) • Charles Sturt University Wagga Wagga Campus (K-12)
SA		
Adelaide	Aspect Treetop School, Ashford	<i>Now seeking satellite Partner Schools.</i>

To contact us about satellite classrooms call Aspect Customer Service on **1800 277 328** or email us on customerservice@aspect.org.au – our Partner Schools cannot provide any advice directly.



"Our daughter transitioned from a mainstream classroom to an Aspect satellite classroom and eventually back to a mainstream classroom. Each step was guided, supported and celebrated."

— ASPECT PARENT

"Aspect provides the opportunity for our staff to participate in professional learning and develop strategies for inclusive teaching, while fostering a strong sense of belonging for all students. By working alongside schools, Aspect has not only enhanced the learning experience for individual students but also enriched entire school communities. The partnership has fostered a culture of inclusivity."

— ANDREW WATSON, EXECUTIVE DIRECTOR OF CATHOLIC EDUCATION DIOCESE OF WAGGA WAGGA

The need for inclusive education has never been greater.
By partnering with Aspect, your school gains access to autism-specific expertise, professional learning for staff, and a proven model that benefits students, families and your wider community.



Access the benefits of an Aspect partnership



What Aspect provides

- ✓ Autism-specific, research-based education.
- ✓ 60 years of autism expertise and in-house research team.
- ✓ Specialised teachers and support staff.
- ✓ Integration into Partner School community.
- ✓ Focus on transitions and independence.
- ✓ Professional learning for Partner School staff.
- ✓ Licence fees to operate fully staffed satellite classrooms.



Benefits for students

- ✓ Tailored learning programs built around strengths and interests.
- ✓ Access to therapies and communication supports (AAC, PECS, speech & OT).
- ✓ Highly trained, accredited staff provide individualised support in small classroom settings.
- ✓ Participation in co-curricular and extracurricular activities with peers.
- ✓ Supported transition pathways to mainstream classrooms and beyond.



Benefits for families

- ✓ Confidence their child receives evidence-informed, autism-specific support.
- ✓ Assurance of continuity between home and school, guided by lived experience.
- ✓ Choice to enrol their Autistic and mainstream-ready children in the same school community.
- ✓ Stronger sense of belonging and inclusion within the local community.
- ✓ Clear transition planning with information packs, surveys and follow-up support.



Benefits for your school

- ✓ Access to best practice approaches that improve outcomes for all learners.
- ✓ Backed by proven expertise and continuous improvement.
- ✓ Staff gain professional learning, strategies and coaching from Aspect teachers.
- ✓ Aspect staff join staff meetings, events and share expertise that strengthens whole-school capacity.
- ✓ Support with case management and student transition, reducing risk and workload.

Experience the advantages of an Aspect satellite classroom

The satellite classroom difference

Satellite classrooms build very effective environments where Autistic students truly feel like they 'belong' in their local school community.

Individual learning plans are implemented in conjunction with increasing opportunities for integration thereby successfully preparing students to enter mainstream classrooms.

Partner schools benefit from Aspect Education's unparalleled understanding of inclusion and the importance of creating environments that celebrates individuality and ensures every student thrives.

"We want the students to be part of the community with the longer term goal to transition them from an Aspect classroom to a mainstream school setting."

- PRINCIPAL, DEPARTMENT OF EDUCATION

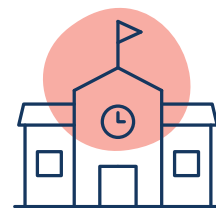
The benefit of on-site professional learning

One of the most valuable benefits of partnering with Aspect is the access your staff gain to targeted professional learning in autism-specific education. Our programs are practical, evidence-informed, and designed to strengthen inclusive practice across your entire school.

Aspect professional learning empowers your teachers and support staff to:

- **Engage with students as individuals** – tools like Data Walls help teachers track progress and tailor support.
- **Create structured, supportive classrooms** – visual schedules, cues and routines reduce anxiety and help all students engage.
- **Amplify student voice** – strategies for including Autistic students in decisions about how they learn, leading to greater engagement.
- **Apply autism-friendly practices** – sensory accommodations and learning adaptations that improve focus and participation.
- **Collaborate through case management and peer learning** – Instructional Case Management Meetings (ICMMs), Learning Walks and Talks, and joint planning sessions give teachers hands-on ways to embed inclusive strategies.
- **Integrate therapeutic support** – our therapists work alongside teachers, modelling strategies and sharing approaches that extend across classrooms.

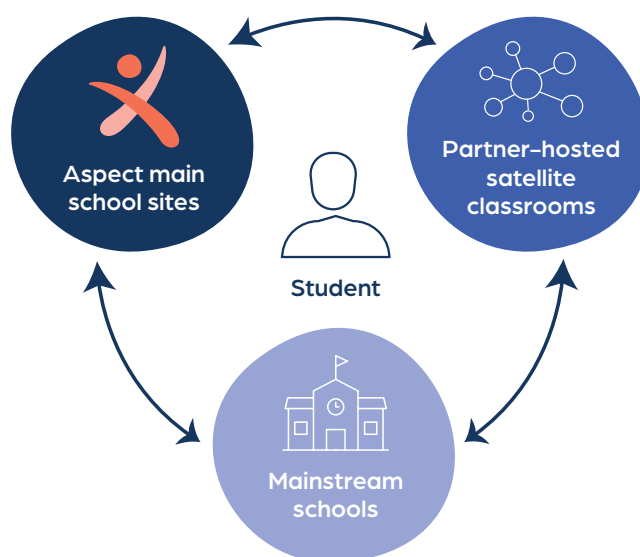
The benefit to your school: your team develops skills and confidence that extend far beyond the satellite classroom, creating an inclusive culture that supports every learner.



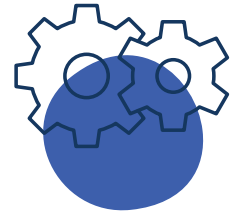
The benefit of enrolment and transition pathways

Aspect works closely with partner schools to, where appropriate, prioritise enrolment and transition for local families seeking support for students on the autism spectrum. Transition can occur across the Aspect and partner school campuses as part of an ongoing partnership arrangement.

When Aspect students are ready to move into a mainstream setting, Individual Transition Plans (ITP) outline how follow-up support will be conducted for the first 12 months of the student's transition into their new school. Parents/carers are provided with information packs as part of the transition process and are invited to participate in exit surveys.



How an Aspect partnership works



Hosting a satellite classroom is straightforward. Most schools can partner with Aspect by making an existing surplus classroom available or a suitable space for an Aspect-provided demountable classroom. Aspect takes care of staffing, training and integration and you simply provide a welcoming environment. Aspect's satellite partnership brings all the benefits of Aspect's services to a local community without the costs of establishment.

Currently, around half of Aspect's 1300 students are co-located in satellite classrooms hosted by mainstream schools. These students wear the local uniform, participate in community events and are a part of the school community as a whole. This arrangement has proved to be very successful in providing transitions towards the Partner School enrolment program over time, as well as providing a local choice for parents of Autistic children not ready for a mainstream setting.

Each satellite classroom is governed by a clear multi-year licence agreement between Aspect and the partner school or system, with defined protocols managed jointly by the host and Aspect Principals. This ensures transparency, shared responsibility, and long-term confidence in the partnership.

Aspect's satellite classrooms are not stand-alone units — they are fully integrated extensions of our established school system. This means they are:

- Overseen by local leadership through an Aspect Principal and coordination team.
- Staffed with trained teachers and aides at a 2:6–9 ratio.
- Supported by national quality assurance, case management and expert oversight.
- Backed by property and facilities support from Aspect's central team.
- Connected to families, with a referral pathway into the satellite classroom.

In addition, Aspect provides professional learning and robust advice on inclusive classrooms, giving your staff the tools and confidence to support Autistic students — and strengthening whole-school capacity for every learner.

Further, Aspect supports partner schools with robust advice and professional learning around the challenge of inclusive classrooms. This brings an upskilling opportunity around autism-specific education across the whole school community.

"Our daughter made her first friends, joined assemblies, and stood proudly to receive awards. She belonged."

— ASPECT PARENT



*"Aspect helped our son
go from calling himself
dumb to walking into
school happy every day."*

— ASPECT PARENT

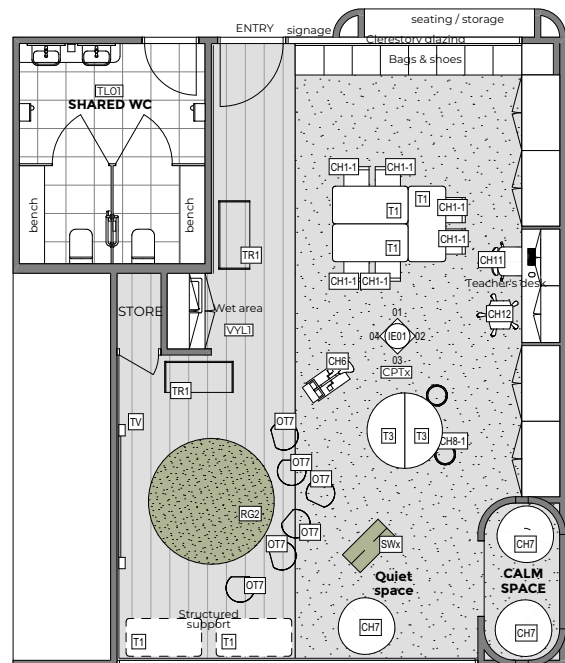
What your school needs to host a satellite classroom

Aspect has over 100 satellite classrooms across NSW which are all different. The basic specifications are:

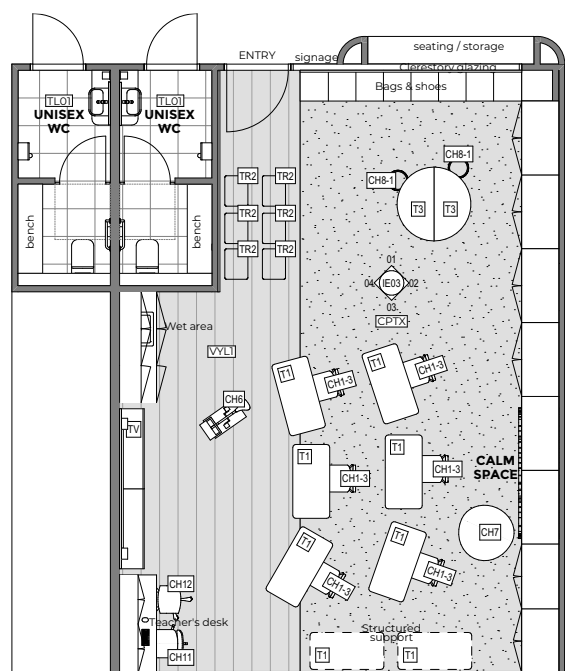
- A preference for a minimum of two classrooms to establish community and growth potential.
- Dimensions of at least 8m x 8m
- Suitable access and location to playground
- Suitable access and location to parking and amenities, where possible
- Provision of standard plumbing, electrical and fire safety services
- Provision of air conditioning.

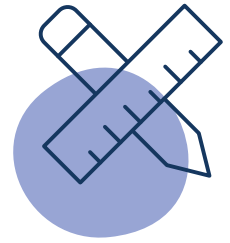
Example room layouts

K- 2 classroom

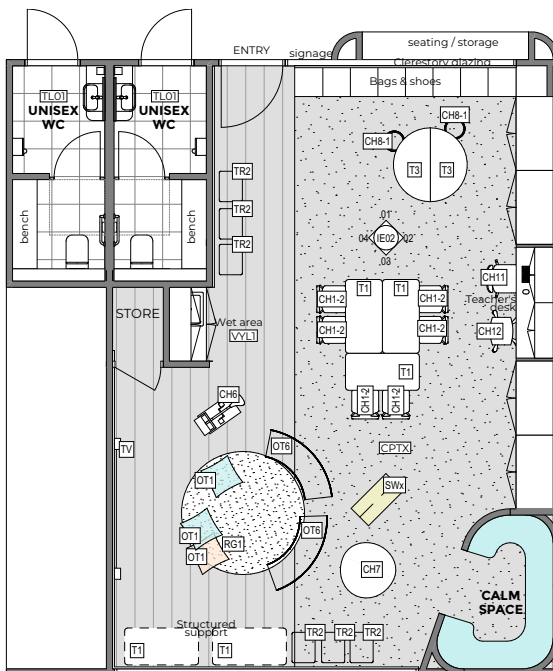


Secondary classroom

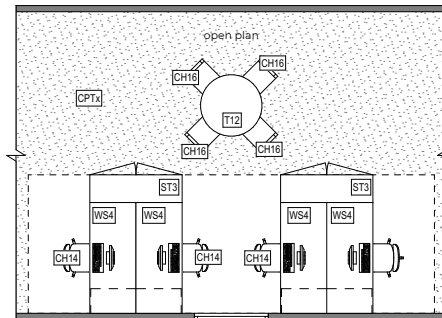




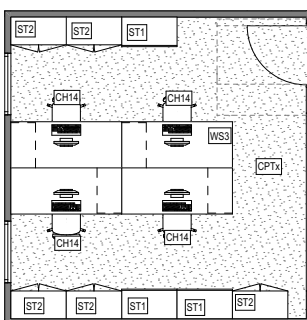
Primary classroom



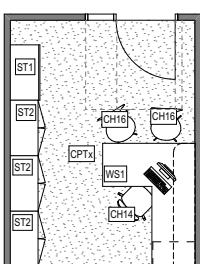
4 x shared workstations



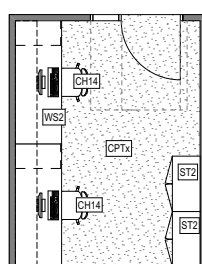
4 person office



Single office (Principal)



2 person office



Let's build the future of inclusive education

A partnership with Aspect is more than a classroom, it's a proven model that strengthens your staff, supports your families, and positions your school as a leader in inclusive education.

Connect with us today to discuss how your school can benefit from hosting a satellite classroom.

Ben Dawe
Head of Partnerships and Business Development
0431 471 351 | bdawe@aspect.org.au



aspect.org.au | 1800 277 328 | customerservice@aspect.org.au